



got swppp?

got SWPPP?

New Construction General Permit

Day 1 of the 2010 Got SWPPP? Storm Water Workshops

Today's municipal sponsors ...



got swppp?

got SWPPP?

WELCOME!



Jeff Wingfield
Port of Stockton



Christina Walter
City of Stockton



Brandon Nakagawa
San Joaquin County



got SWPPP?



Thank you!

... to our corporate sponsors





got swppp?

got **SWPPP?**

Project Details:

- 3 Buildings (total 23,200 sq. ft.)
- Parking lot 53,400 sq. ft.
- Undeveloped lot
- Total disturbed soil = 150,000 sq. ft.
- Receiving water is Stockton MS4 and a tributary creek to the San Joaquin River
- CGP and SWQCCP apply

got swppp?

got SWPPP?

Proposed Development Location



High spot : 27 ft. AMSL

Proposed development site
152,000 sq. ft.

Drainage Creek
Low spot: 7 ft. AMSL

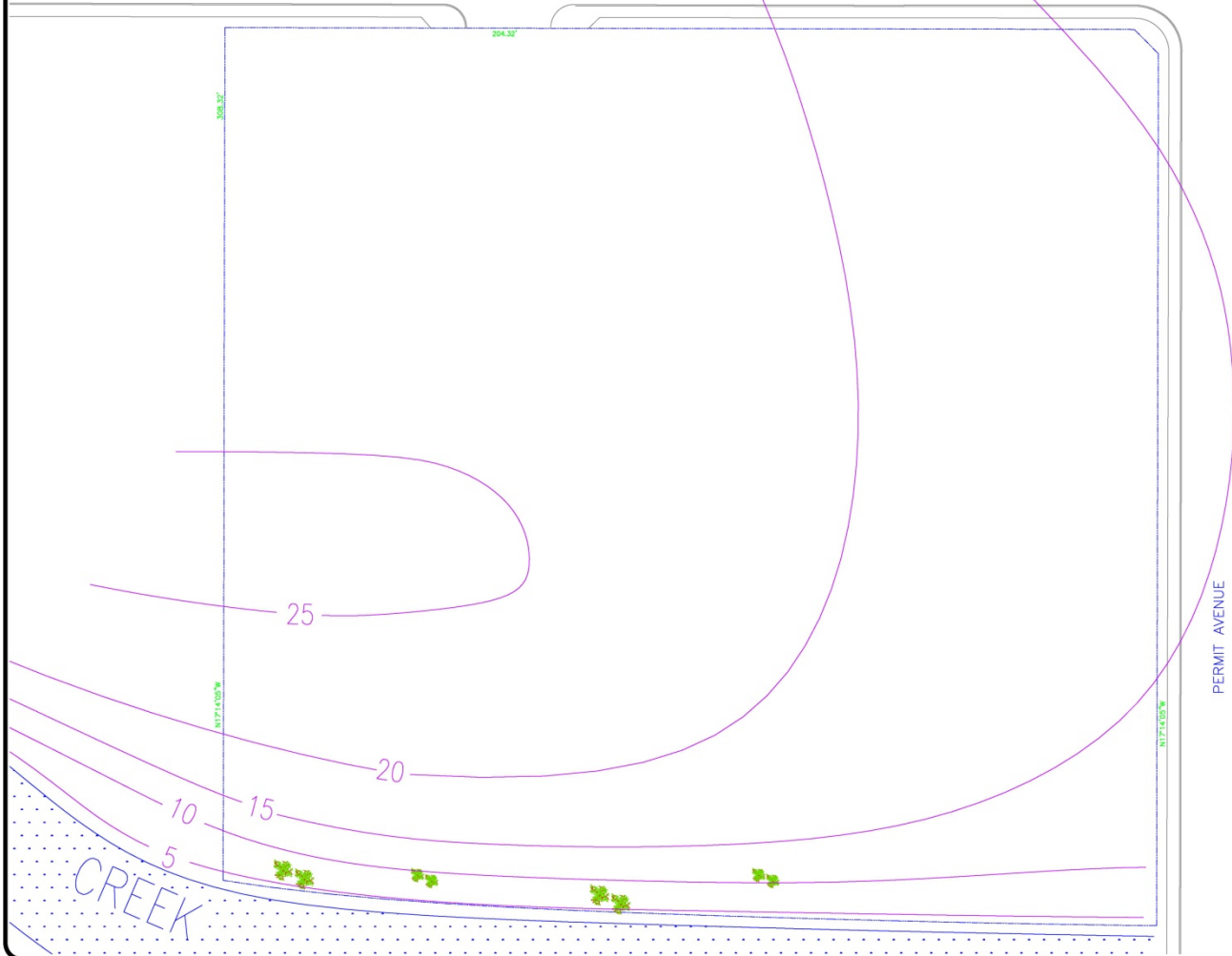
38° 00' 16"N 121° 15' 51"W

got swppp?

got SWPPP?

RUNOFF GIRCLE

SITE PLAN



REVISIONS BY

WGR
SOUTHWEST, INC.
C/O W. G. R. ASSOCIATES, INC.
1000 WEST 10TH STREET
SUITE 100
DENVER, CO 80202
PHONE: (303) 733-5385

Use with Permission From:
BRC
DESIGN ASSOCIATES
ALL WORK SHALL EXCEED THE MINIMUM
30% WATERFLOO PROTECTION, CA. 8005
300-445-3300 FAX # 200-543-3303

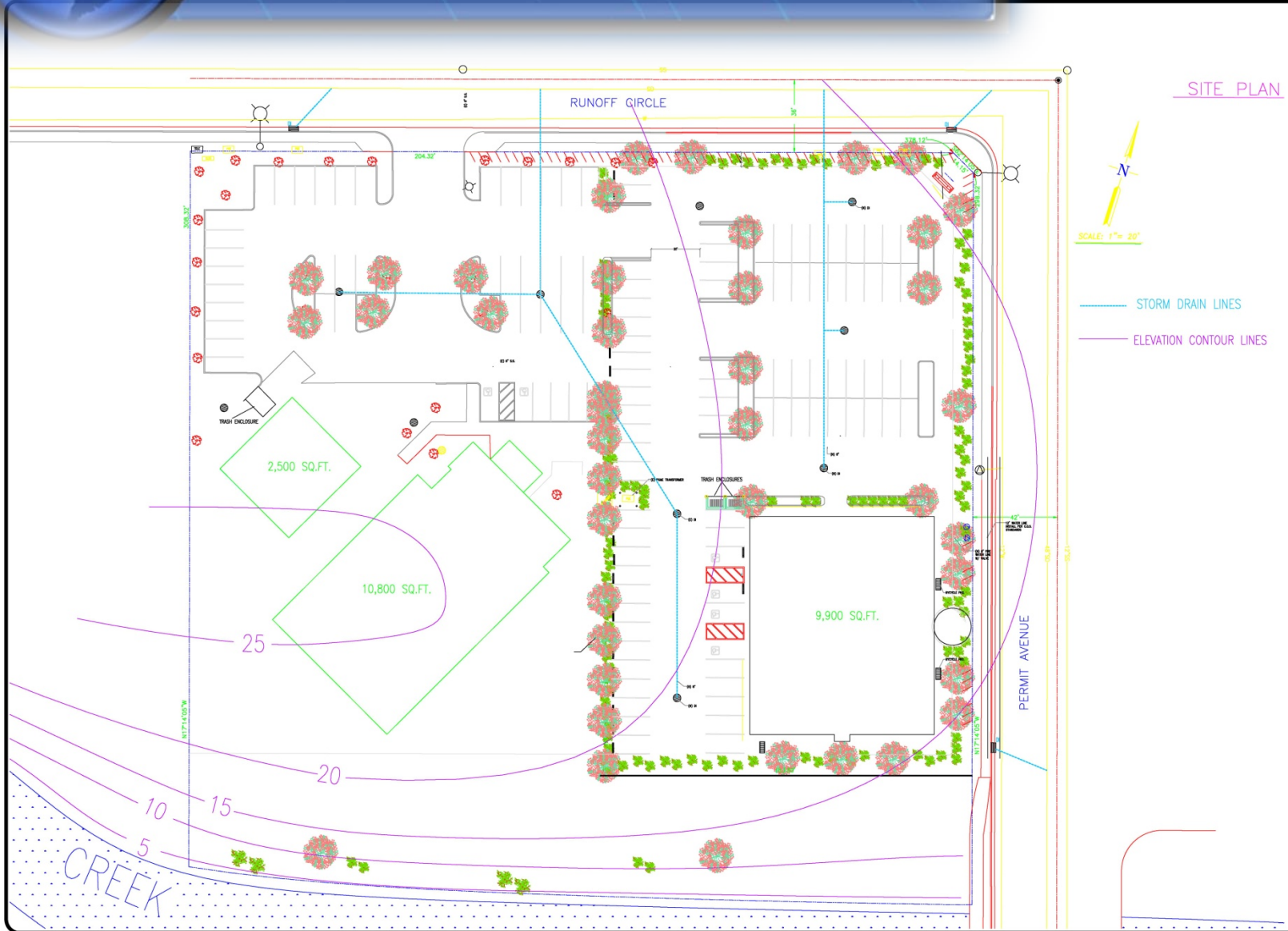
"GOTSWPPP?"
BUSINESS PARK

DATE: 11/10/09
SCALE: 1"=40'
DRAWN: P. GARDNER
JOB: 09-001

SHEET
C-2
END

got swppp?

got SWPPP?



SITE PLAN



— STORM DRAIN LINES
— ELEVATION CONTOUR LINES

REVISIONS BY

WGR
SOUTHWEST, INC.
316 W. PRINCE ST.
CULVER CITY, CA 90230
PHONE: (800) 234-5584

Use with Permission From:
BRC
DESIGN ASSOCIATES
ALL SAN JOAQUIN COUNTY OF WORKS
3000 WESTFIELD ROAD STOCKTON, CA 95205
209-943-3000 FAX # 209-943-3003

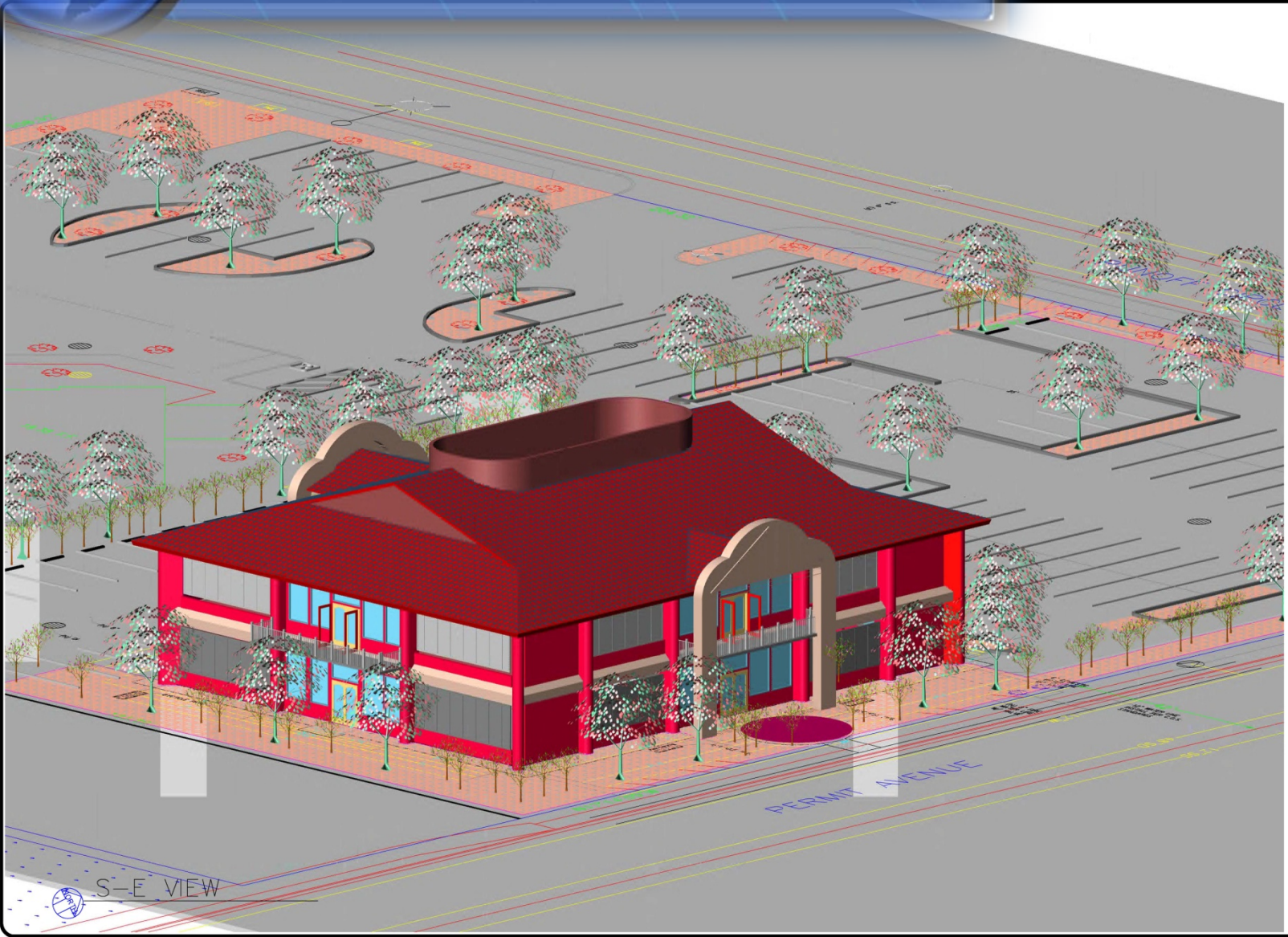
"GOTSWPPP?"
BUSINESS PARK

DATE: 10/10/08
SCALE: 1" = 20'
DRAWN: P. J. J.
JOB: 08-001

SHEET
C-1

got swppp?

got SWPPP?



S-E VIEW

REVISIONS BY

WGR
SOUTHWEST, INC.
1310 W. WYOMING AVE.
MILWAUKEE, WI 53212
PHONE (262) 354-5350

WGR
Southwest, Inc.

Use with Permission From:
B R C
DESIGN ASSOCIATES
PO Box 2000 Stockton, CA 95205
309 Westcor Blvd. Stockton, CA 95205
209-453-3333 FAX 209-453-3333

"GOT SWPPP?"
BUSINESS PARK

DATE: 6-5-04
SCALE: 1/4" = 1' OR AS SHOWN
DRAWN:
JOB:
SHEET
A-5.5
OF SHEETS



got swppp?

got **SWPPP?**

Project Details:

- 3 Buildings (total 23,200 sq. ft.)
- Parking lot 53,400 sq. ft.
- Undeveloped lot
- Total disturbed soil = 150,000 sq. ft.
- Receiving water is Stockton MS4 and a tributary creek to the San Joaquin River
- CGP and SWQCCP apply



got swppp?

got SWPPP?



got swppp?

General Contractors

Specializing in Environmental Friendly Projects

(800) GOT - SWPPP



got swppp?

got SWPPP?

Our Assignment:

- File the PRDs (9:00 – 10:15 AM)
- Select & Specify BMPs (10:30 – 11:20 AM)
- Prepare the SWPPP (11:30 – 12 Noon)
Lunch Break (12 Noon – 12:45 PM)
- Perform Inspections and Monitoring (12:45 – 2:15 PM)
- Evaluate, Report, and Terminate (2:30 – 3:30 PM)



got swppp?

got **SWPPP?**

Permit Registration Documents (PRDs)

9:00 – 10:15 AM



got swppp?

got SWPPP?

Permit Registration Documents (PRDs) need to be submitted before start of construction

- Notice of Intent (NOI)
- Risk Assessment
- Site Map
- Storm Water Pollution Prevention Plan
- Annual Fee
- Signed Certification Statement



got swppp?

got SWPPP?

What is SMARTS?

- **Purpose:**

Provide a platform where dischargers, regulators, and the public can enter, regulate, and/or comment on storm water data including NOIs, NOTs, compliance, and monitoring data.

- Internet-based

- Available 24/7

- Reports

- SWRCB/RWQCB prioritize regulatory tasks (i.e. inspections, view trends in compliance, provide data to the Legislature).
- Public reports - NOI, Inspections, Violations, and Enforcement data.



got swppp?

got SWPPP?

PRD Process

- Register for SMARTS account
- Link Approved Signatories/Data Submitters
- Re-certify and file new NOIs
- Upload attachments
- Enter Sampling/Monitoring data
- Notice of Termination



got swppp?

got SWPPP?

Legally Responsible Person (LRP)

- The LRP must electronically file PRDs prior to the commencement of construction activity.
- Must be the owner or a high level officer of the organization.
 - For a corporation: a responsible corporate officer. For the purpose of this section, a responsible corporate officer means: (a) a president, secretary, treasurer, or vice-president of the corporation in charge of a principal business function, or any other person who performs similar policy or decision-making functions for the corporation; or (b) the manager of the facility if authority to sign documents has been assigned or delegated to the manager in accordance with corporate procedures.
 - For a municipality, State, Federal, or other public agency: either a principal executive officer or ranking elected official.



got swppp?

got SWPPP?

LRP
Primary
Account Holder

Approved Signatory
Enter & Certify Data

Data Submitter
Enter data only

General Public
View Only

got swppp?

got SWPPP?

Stormwater Multi
Application Reporting
& Tracking System
SMARTS

Fabrizio Chiodi
pchs@waterboards.ca.gov
State Water Resources Control Board
Division of Water Quality
Industrial/Construction Storm Water Unit

Skip to: [Content](#) | [Footer](#) | [Accessibility](#)



- Home
- About Us
- Public Notices
- Board Info
- Board Decisions
- Water Issues
- Publications/Forms
- Press Room

Welcome to the State Water Resources Control Board |

GOVERNOR
SCHWARZENEGGER



Visit his Website

Water Boards Storm Water Multiple Application & Report Tracking System 2

- » Cal/EPA
- » State and Regional Water Boards' Map
- » Laws/Regulations
- » Plans/Policies
- » Programs
- » Decisions Pending and Opportunities for Public Participation

WATER BOARD LINKS

Welcome to Storm Water Multiple Application and Report Tracking System - SMARTS!

The Storm Water program regulates storm water discharges from locations such as industrial facilities, construction sites, and small linear projects. The Storm Water program is also responsible for processing, reviewing, updating, terminating Notices of Intent (NOIs), annual reports, and maintaining the billing status of each discharger.

SMARTS has been developed to provide an online tool to assist dischargers in submitting their NOIs, NECs, NOTs, and Annual Reports, as well as, viewing/printing Receipt Letters, monitoring the status of submitted documents, and viewing their application/renewal fee statements. The system will also allow the Regional Board and State Board staff to process and track the discharger submitted documents.

SMARTS is a user account and password protected system where a valid user account and password is needed to access the system. To create an account, please click the "Sign Up" button on the right side of the screen.

If you have any questions or for further assistance, please call State Water Board Staff at: 1-866-563-3107 Monday thru Friday 8:00AM - 5:00PM, or email

SMARTS LOGIN

User ID:

Password:

Login

Not signed up with SMARTS yet?

To submit NOIs, Annual Reports, View/Print annual fees, or comment on submitted documents, please click the "Sign Up" button.

Sign Up

Forget your password?

[Reset your password here](#)

Interested in viewing submitted NOI/SWPPP documents or Annual Report data?

View SW Data

Fridays

smarts.waterboards.ca.gov

A circular icon with a blue globe showing the Americas, with the text "got swppp?" overlaid in white.

got swppp?

got SWPPP?

Risk Assessment



got swppp?

got SWPPP?

Risk Determination is a Two Step Process:

- *First Half* of the Risk Determination factor –
Sediment Discharge Risk
 - Calculate soil loss using the RUSLE equation
 - **A = (R) (K) (LS) (C) (P)**



got swppp?

got SWPPP?

RUSLE - Revised Universal Soil Loss Equation ...

$$A = (R) (K) (LS) (C) (P)$$

For CGP purposes, C and P are assumed to equal 1



got swppp?

got **SWPPP?**

RUSLE - Revised Universal Soil Loss Equation ...

$$A = (R) (K) (LS)$$

A = **Average Annual Acre Tons** of soil loss

R = Rainfall runoff erosivity factor

K = Soil erodibility factor which represents both susceptibility of soil to erosion and the rate of runoff

L = Slope length factor, representing the effect of slope length on erosion

S = the slope steepness factor, representing the effect of slope steepness on erosion



got SWPPP?



- Basic Information
- Municipal MS4s
- Construction Activities
- Industrial Activities
- Road-Related MS4s
- Menu of BMPs
- Green Infrastructure
- Urban BMP Tool
- Stormwater Home

National Pollutant Discharge Elimination System (NPDES)

[Recent Additions](#) | [Contact Us](#) | [Print Version](#) Search NPDES: [GO](#)

[EPA Home](#) > [OW Home](#) > [OWM Home](#) > [NPDES Home](#) > [Stormwater](#) > [Rainfall Erosivity Factor Calculator](#)

- NPDES Topics
- Alphabetical Index
- Glossary
- About NPDES



Welcome to the Rainfall Erosivity Factor Calculator!



This online calculator will assist you in estimating the rainfall erosivity factor (R factor) for your construction project.

The NPDES Stormwater Phase II Rule allows NPDES permitting authorities to accept "low erosivity waivers" for small construction sites. The waiver process exempts small construction sites (disturbing under five acres) from NPDES permitting requirements when the construction activity takes place during a relatively short time in arid or semi-arid areas.

EPA accepts low erosivity waivers for the five states and other areas where [EPA is the permitting authority](#). Several states that are authorized to implement the NPDES permitting program also accept low erosivity waivers. Check with your state NPDES permitting authority for more information.

This online calculator provides an easy way to estimate the erosivity factor for a given construction project. Simply enter some basic information about your project into the calculator and it will provide you with an "R factor." If the R factor is less than 5, you may submit a Low Erosivity Waiver (if accepted by your permitting authority). If the R factor is greater than 5, you will need to submit a Notice of Intent to obtain coverage under an appropriate NPDES Construction General

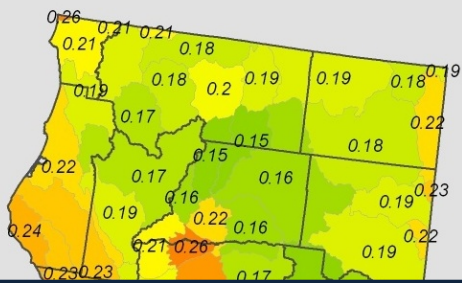
- Stormwater Information
- [Recent Additions](#)
- [FAQs](#)
- [Publications](#)
- [Regulations](#)
- [Training & Meetings](#)
- [Links](#)
- [Contacts](#)



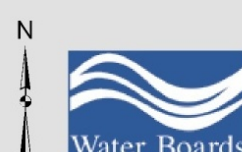
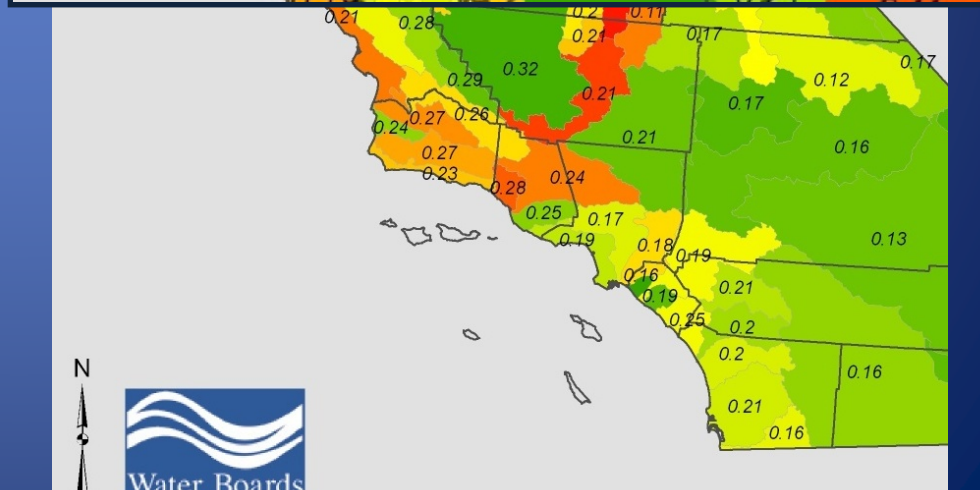
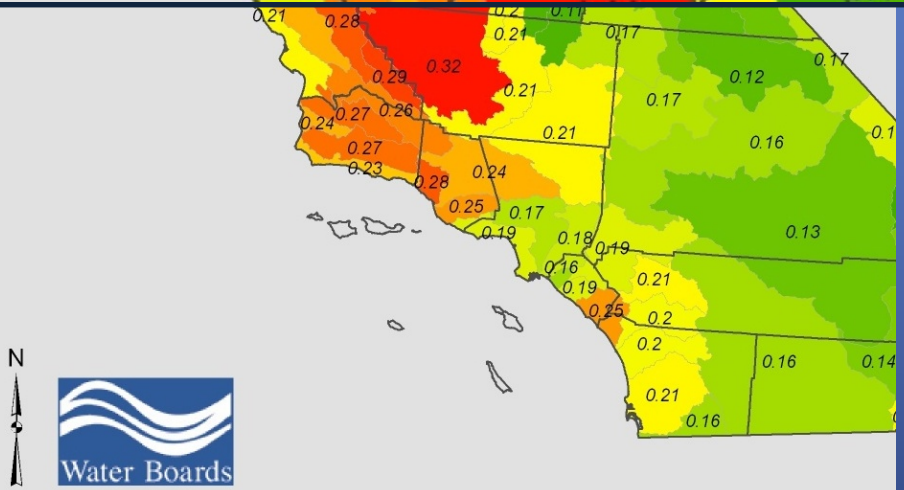
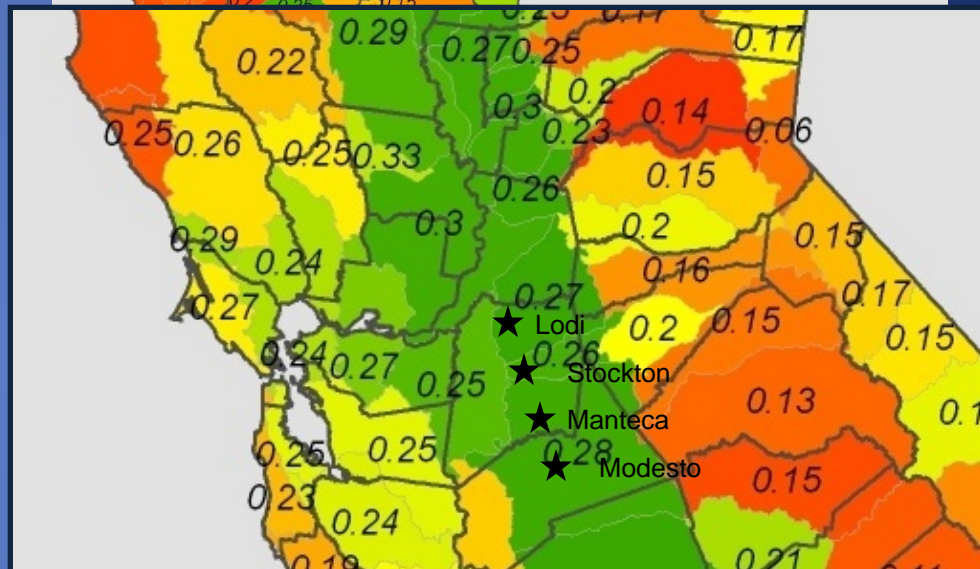
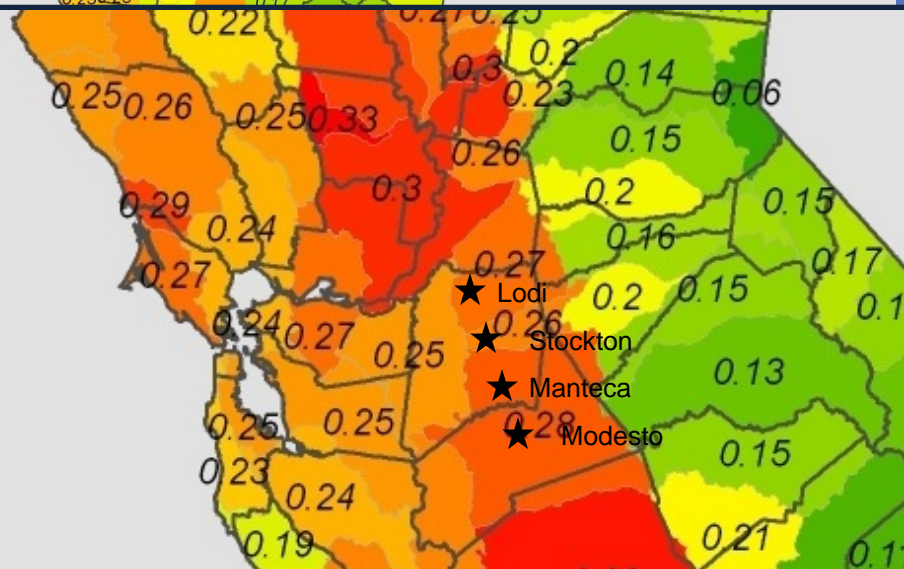
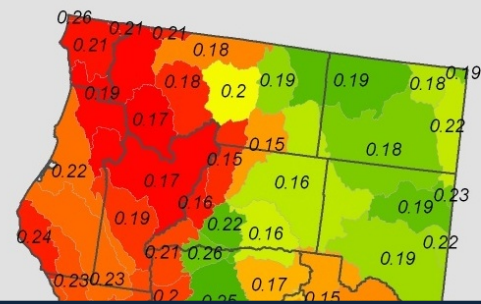
The documents on this site are best viewed

<http://cfpub.epa.gov/npdes/stormwater/lew/lewcalculator.cfm>

Rusle K Factor



Rusle LS Factor





got swppp?

got SWPPP?

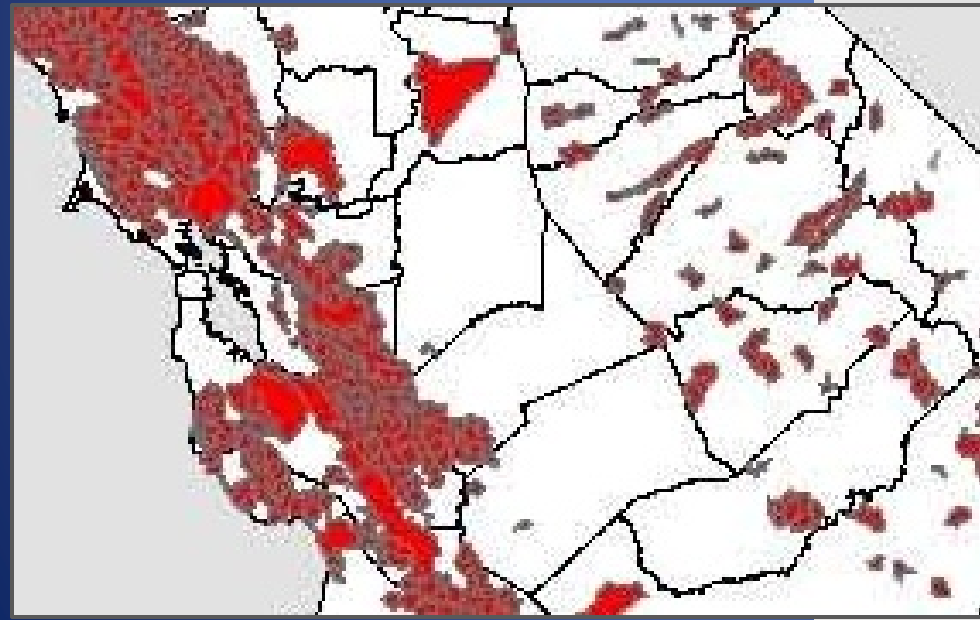
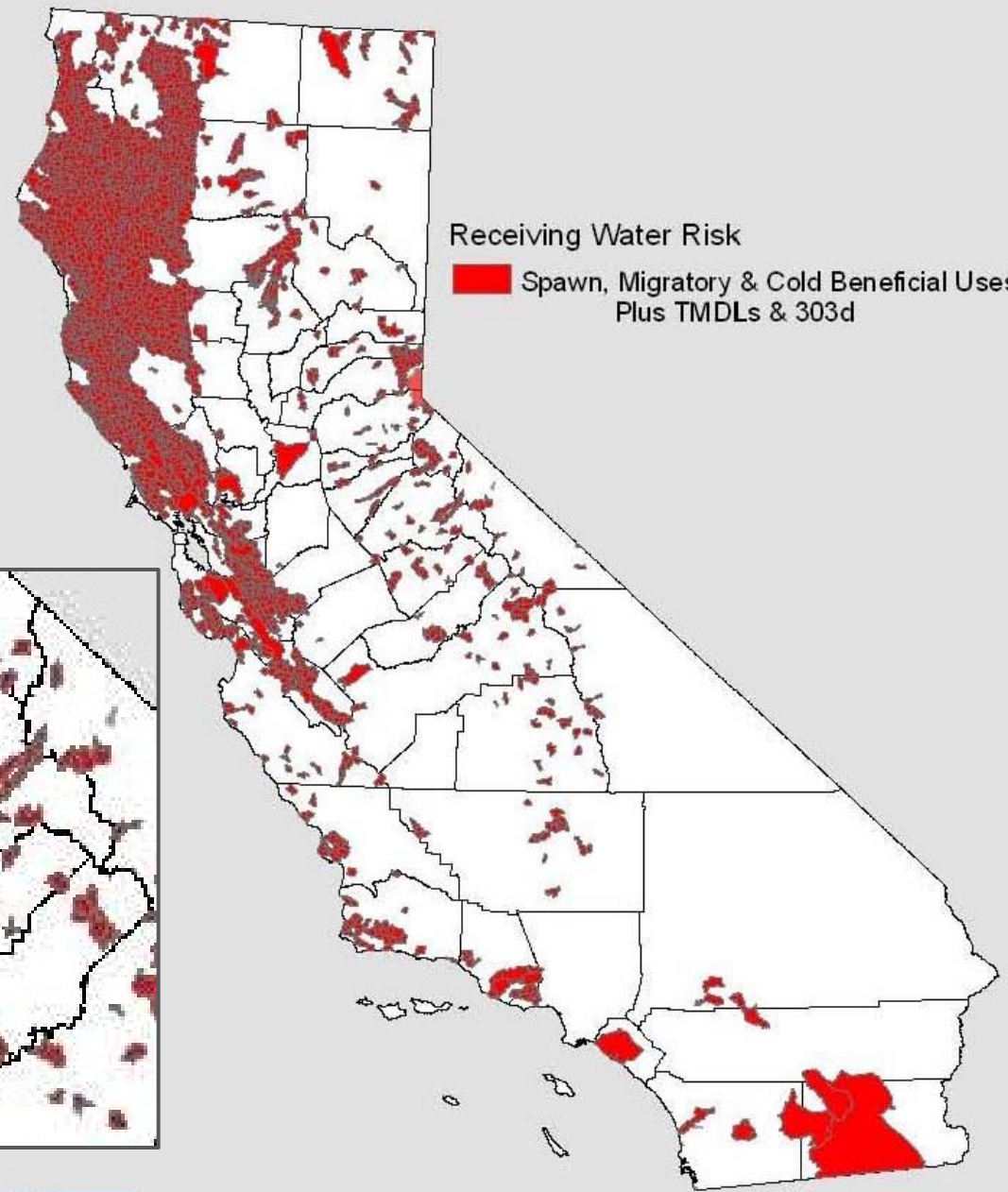
Risk Determination is a Two Step Process:

- First Half of the Risk Determination factor – Sediment Discharge Risk
 - Calculate soil loss using the RUSLE equation
 - **$A = (R) (K) (LS) (C) (P)$**
- ***Second Half*** of the Risk Determination factor – Receiving Water Risk
 - Sediment sensitive water; 303(d) listed or TMDL for sediment-related pollutant; or beneficial Uses of COLD, SPAWN, and MIGRATORY



got SW

Receiving Water Risk



Data Source: UC Davis GeoWBS
Dynamic Query System and SWRCB



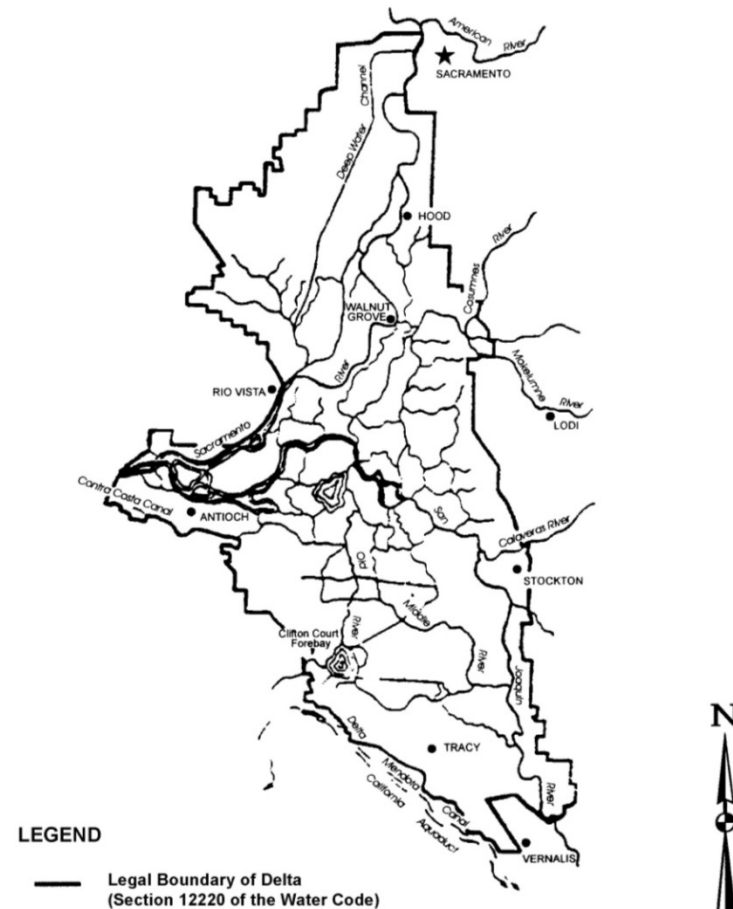
got swppp?

got SWPPP?

The Basin Plan for the Sacramento and San Joaquin Rivers show the following listed as having COLD & SPAWN & MIGRATORY:

- Consumnes River (source to Delta)
- Mokelumne River (Camanche Reservoir to Delta)
- Tuolumne River (Don Pedro Dam to San Joaquin River)
- Stanislaus River (Goodwin Dam to San Joaquin River)
- Merced River (McSwain Reservoir to San Joaquin River)
- The Sacramento – San Joaquin Delta

BOUNDARY OF THE SACRAMENTO - SAN JOAQUIN DELTA



got swppp?

got SWPPP?

wqo_2009_0009_app_1 [Compatibility Mode] - Microsoft Excel

Home Insert Page Layout Formulas Data Review View Developer Acrobat

Paste Font Alignment Number Styles Cells

H18

	A	B	C	D	E	F	G
1	Version 6/10/2009						
2	Risk Determination Worksheet						
3							
4	Step 1 Determine Sediment Risk via one of the options listed:						
5	1. GIS Map Method - EPA Rainfall Erosivity Calculator & GIS map						
6	2. Individual Method - EPA Rainfall Erosivity Calculator & Individual Data						
7	Step 2 Determine Receiving Water Risk via one of the options listed:						
8	1. GIS map of Sediment Sensitive Watersheds provided (in development)						
9	2. List of Sediment Sensitive Watersheds provided						
10	Step 3 Determine Combined Risk Level						
11							

California's Risk Determination Worksheet – Appendix 1 of the CGP

got swppp?

got SWPPP?

Combined Risk Level Matrix

		<u>Sediment Risk</u>		
		Low	Medium	High
<u>Receiving Water Risk</u>	Low	Level 1	Level 2	
	High	Level 2		Level 3

Project Sediment Risk: **Low**

Project RW Risk: **High**

Project Combined Risk: **Level 2**

got swppp?

got SWPPP?

Stormwater Multi
Application Reporting
& Tracking System
SMARTS

Fabrizio Chiodi
pchoi@waterboards.ca.gov
State Water Resources Control Board
Division of Water Quality
Industrial/Construction Storm Water Unit

Skip to: [Content](#) | [Footer](#) | [Accessibility](#)



- Home
- About Us
- Public Notices
- Board Info
- Board Decisions
- Water Issues
- Publications/Forms
- Press Room

Welcome to the State Water Resources Control Board |

GOVERNOR
SCHWARZENEGGER



Visit his Website

Water Boards Storm Water Multiple Application & Report Tracking System 2

- » Cal/EPA
- » State and Regional Water Boards' Map
- » Laws/Regulations
- » Plans/Policies
- » Programs
- » Decisions Pending and Opportunities for Public Participation

WATER BOARD LINKS

Welcome to Storm Water Multiple Application and Report Tracking System - SMARTS!

The Storm Water program regulates storm water discharges from locations such as industrial facilities, construction sites, and small linear projects. The Storm Water program is also responsible for processing, reviewing, updating, terminating Notices of Intent (NOIs), annual reports, and maintaining the billing status of each discharger.

SMARTS has been developed to provide an online tool to assist dischargers in submitting their NOIs, NECs, NOTs, and Annual Reports, as well as, viewing/printing Receipt Letters, monitoring the status of submitted documents, and viewing their application/renewal fee statements. The system will also allow the Regional Board and State Board staff to process and track the discharger submitted documents.

SMARTS is a user account and password protected system where a valid user account and password is needed to access the system. To create an account, please click the "Sign Up" button on the right side of the screen.

If you have any questions or for further assistance, please call State Water Board Staff at: 1-866-563-3107 Monday thru Friday 8:00AM - 5:00PM, or email

SMARTS LOGIN

User ID:

Password:

Login

Not signed up with SMARTS yet?

To submit NOIs, Annual Reports, View/Print annual fees, or comment on submitted documents, please click the "Sign Up" button.

Sign Up

Forget your password?

[Reset your password here](#)

Interested in viewing submitted NOI/SWPPP documents or Annual Report data?

View SW Data

smarts.waterboards.ca.gov

Fridays



got swppp?

got **SWPPP?**

Select & Specify BMPs

10:30 – 11:20 AM



got swppp?

got SWPPP?

Mandatory Level 2 BMPs Apply

- Good Site Management
“Housekeeping”
- Non-storm Water Management
- Erosion Control
- Sediment Controls
- Run-on and Runoff Controls

ATTACHMENT D

ATTACHMENT D RISK LEVEL 2 REQUIREMENTS

A. Effluent Standards

[These requirements are the same as those in the General Permit order.]

1. Narrative – Risk Level 2 dischargers shall comply with the narrative effluent standards listed below:
 - a. Storm water discharges and authorized non-storm water discharges regulated by this General Permit shall not contain a hazardous substance equal to or in excess of reportable quantities established in 40 C.F.R. §§ 117.3 and 302.4, unless a separate NPDES Permit has been issued to regulate those discharges.
 - b. Dischargers shall minimize or prevent pollutants in storm water discharges and authorized non-storm water discharges through the use of controls, structures, and management practices that achieve BAT for toxic and non-conventional pollutants and BCT for conventional pollutants.
2. Numeric – Risk level 2 dischargers are subject to a pH NAL of 6.5-8.5, turbidity NAL of 250 NTU.

got swppp?

got SWPPP?



**CALIFORNIA STORMWATER
QUALITY ASSOCIATION®**

Dedicated to the Advancement of Stormwater Quality Management, Science, and Regulation

Hello John Teravskis | Logout

Search:

[Home](#) [About Us](#) [Contacts](#) [LID](#) [Links](#) [Meetings](#) [Membership](#) [Members Only](#) [Resources](#) [Store](#)

You are here: [Left Navigation](#) » [BMP Handbooks Portal](#)

Thursday, April 08, 2010

CASQA BMP Handbooks Portal

[BMP Handbooks Home](#) [Construction Handbook Home](#) [Browse](#) [Interact - Map](#) [Interact - Query](#) [Links](#) [Feedback](#)



Alternative 1: Access the Handbook Text

Do you want to access the Construction BMP Handbook?

- [Handbook Overview \(Table of Contents linked to full text\)](#)
- [Preparing a SWPPP \(Section 2, Appendix B\)](#)
- [General Information on Selecting BMPs\(Section 2.5, Appendix F\)](#)
- [Monitoring \(Section 2, Appendices C, D and E\)](#)

Quick Links

- [Construction General Permit and Notice of Intent \(NOI\)](#)
- [Notice of Termination \(NOT\)](#)
- [State Water Resources Control Board](#)
- [Beneficial Uses \(UC Davis ICE\)](#)
- [Rainfall-runoff Erosivity Calculator](#)
- [More Links ...](#)

Do you want information on specific BMPs? Use either the map-based or the query-based selector below.

got swppp?

got SWPPP?

Now it is your turn!

Work as a group and complete the BMP worksheet for the following construction phases:

- Project set-up
- Grading
- Concrete Work
- Structural Work
- Paving
- Landscaping
- Site Stabilization

Mark up your site drawings to show BMP locations.



Project Phase	
Project set-up:	Scheduling Co
	Conduct and ir used that are r outdoors and e conditions.
	Determine location and method for equipment storage, fueling, material storage, stock piles, chemical toilets, etc.
	Spill response and cleanup resources
	Construction entrances / exits

got swppp?

got SWPPP?

Share your plans



A circular blue icon with a globe showing the Americas, containing the text "got swppp?".

got swppp?

got SWPPP?

SWPPP Preparation

11:30 AM – 12 Noon

got swppp?

got SWPPP?



**CALIFORNIA STORMWATER
QUALITY ASSOCIATION®**

Dedicated to the Advancement of Stormwater Quality Management, Science, and Regulation

Hello John Teravskis | Logout

Search:

[Home](#) [About Us](#) [Contacts](#) [LID](#) [Links](#) [Meetings](#) [Membership](#) [Members Only](#) [Resources](#) [Store](#)

You are here: [Left Navigation](#) » [BMP Handbooks Portal](#)

Thursday, April 08, 2010

CASQA BMP Handbooks Portal

[BMP Handbooks Home](#) [Construction Handbook Home](#) [Browse](#) [Interact - Map](#) [Interact - Query](#) [Links](#) [Feedback](#)



Alternative 1: Access the Handbook Text

Do you want to access the Construction BMP Handbook?

- [Handbook Overview \(Table of Contents linked to full text\)](#)
- [Preparing a SWPPP \(Section 2, Appendix B\)](#)
- [General Information on Selecting BMPs\(Section 2.5, Appendix F\)](#)
- [Monitoring \(Section 2, Appendices C, D and E\)](#)

Quick Links

- [Construction General Permit and Notice of Intent \(NOI\)](#)
- [Notice of Termination \(NOT\)](#)
- [State Water Resources Control Board](#)
- [Beneficial Uses \(UC Davis ICE\)](#)
- [Rainfall-runoff Erosivity Calculator](#)
- [More Links ...](#)

Do you want information on specific BMPs? Use either the map-based or the query-based selector below.

Appendix B Stormwater Pollution Prevention Plan Outline

Annotated Outline of SWPPP Components to meet General Permit Requirements

This appendix presents a recommended structure for a construction site [Stormwater Pollution Prevention Plan](#) (SWPPP) with annotated content. The structure and content is based on a combination of specific [General Permit](#) requirements and other suggested content to meet the overall General Permit requirements *to design a SWPPP to control construction site pollutants and their sources (Section XIV.A.1) and that the SWPPP must include information needed to demonstrate compliance with all requirements of the General Permit (Section I.M.77)*. The level of detail and content of a site-specific SWPPP should be tailored to the specific project based on the judgment of the [Qualified SWPPP Developer](#) (QSD). *Specific General Permit SWPPP requirements (i.e., items that are specifically required by the General Permit to be included in the site's SWPPP document) are italicized in the below text with reference sections cited (e.g., "Section I.D").*

The suggested SWPPP outline is followed by the outline annotated with suggested content for each section.

B.1 Suggested SWPPP Outline

SWPPP Certification By Qualified SWPPP Developer

SECTION 1 SWPPP Requirements

- 1.1 Introduction
- 1.2 Permit Registration Documents
- 1.3 SWPPP Availability and Implementation
- 1.4 SWPPP Amendments
- 1.5 Retention of Records
- 1.6 Required Non-Compliance Reporting
- 1.7 Annual Report

A circular icon with a blue globe showing the Americas, with the text "got swppp?" overlaid in white.

got swppp?

got **SWPPP?**

Activity

1. Designate a QSD
2. Write out a SWPPP outline
3. Complete your SWPPP map



got swppp?

got **SWPPP?**

LUNCH TIME

12 Noon – 12:45 PM

A circular icon with a blue globe showing the Americas, with the text "got swppp?" overlaid in white.

got swppp?

got SWPPP?

Perform Inspections & Monitoring

12:45 – 2:15 PM



got swppp?

got SWPPP?

Qualified SWPPP Developer

Effective 9/02/11,
a QSD shall have
attended a State
Water Board-
sponsored or
approved QSD
training course.

B. SWPPP Certification Requirements

1. **Qualified SWPPP Developer:** The discharger shall ensure that SWPPPs are written, amended and certified by a Qualified SWPPP Developer (QSD). A QSD shall have one of the following registrations or certifications, and appropriate experience, as required for:
 - a. A California registered professional civil engineer;
 - b. A California registered professional geologist or engineering geologist;
 - c. A California registered landscape architect;
 - d. A professional hydrologist registered through the American Institute of Hydrology;
 - e. A Certified Professional in Erosion and Sediment Control (CPESC)TM registered through Enviro Cert International, Inc.;
 - f. A Certified Professional in Storm Water Quality (CPSWQ)TM registered through Enviro Cert International, Inc.; or
 - g. A professional in erosion and sediment control registered through the National Institute for Certification in Engineering Technologies (NICET).



got swppp?

got **SWPPP?**

Qualified SWPPP Practitioner

Effective 9/02/11,
a QSP shall have
attended a State
Water Board-
sponsored or
approved QSP
training course.

3. **Qualified SWPPP Practitioner:** The discharger shall ensure that all BMPs required by this General Permit are implemented by a Qualified SWPPP Practitioner (QSP). A QSP is a person responsible for non-storm water and storm water visual observations, sampling and analysis. Effective two years from the date of adoption of this General Permit, a QSP shall be either a QSD or have one of the following certifications:
 - a. A certified erosion, sediment and storm water inspector registered through Enviro Cert International, Inc.; or
 - b. A certified inspector of sediment and erosion control registered through Certified Inspector of Sediment and Erosion Control, Inc.

Until 9/02/11, anyone can be a QSP!

A circular icon with a blue globe background and the text "got swppp?" in white, lowercase letters.

got swppp?

got SWPPP?

QSP Duties:

- Weekly inspections
- Pre, during, and post-storm event inspections
- Overseeing BMP repairs
- Rain Event Action Plans
- Visual observations of storm water discharges
- Record rain gauge information
- Quarterly non-storm water discharge inspections



got swppp?

got SWPPP?

Monitoring and Sampling for **Risk Level 1**

- Quarterly non-storm water observations
- Base line, during, and after storm observations
- Conditional sampling for non-visible pollutants

I. Risk Level 1 Monitoring and Reporting Requirements

Table 1- Summary of Monitoring Requirements

Risk Level	Visual Inspections				Sample Collection		
	Quarterly Non-storm Water Discharge	Pre-storm Event Baseline	REAP	Daily Storm BMP	Post Storm	Storm Water Discharge	Receiving Water
1	X	X		X	X		



got SWPPP?

Monitoring and Sampling for **Risk Level 2**

Qualifying Rain Event:

Any event that produces 0.5 inches or more precipitation with a 48 hour or greater period between rain events.

turbidity during qualifying rain events.

I. Risk Level 2 Monitoring and Reporting Requirements

Table 2- Summary of Monitoring Requirements

Risk Level	Visual Inspections					Sample Collection	
	Quarterly Non-storm Water Discharge	Pre-storm Event		Daily Storm BMP	Post Storm	Storm Water Discharge	Receiving Water
		Baseline	REAP				
2	X	X	X	X	X	X	



got SWPPP?

Our Site is **Risk Level 2**

I. Risk Level 2 Monitoring and Reporting Requirements

Table 2- Summary of Monitoring Requirements

Risk Level	Visual Inspections					Sample Collection	
	Quarterly Non-storm Water Discharge	Pre-storm Event Baseline	REAP	Daily Storm BMP	Post Storm	Storm Water Discharge	Receiving Water
2	X	X	X	X	X	X	



got SWPPP?

Types of Inspections / Observations:

- Baseline (initial) & Weekly
- Pre-storm
- During-storm
- Post-storm
- Quarterly Non-Storm Water

Appendix D
Field Monitoring and Analysis Guidance

Risk Level 1, 2, 3 Visual Inspection Field Log Sheet						
Date and Time of Inspection:			Report Date:			
Inspection Type:	<input type="checkbox"/> Weekly	<input type="checkbox"/> Before predicted rain	<input type="checkbox"/> During rain event	<input type="checkbox"/> Following qualifying rain event	<input type="checkbox"/> Contained stormwater release	<input type="checkbox"/> Quarterly non-stormwater
Site Information						
Construction Site Name:						
Construction stage and completed activities:				Approximate area of exposed site:		
Weather and Observations						
Date Rain Predicted to Occur:			Predicted % chance of rain:			
Estimate storm beginning:	Estimate storm duration:		Estimate time since last storm:	Rain gauge reading:		
_____ (date and time)	_____ (hours)		_____ (days or hours)	_____ (inches)		
Observations: If yes identify location						
Odors	Yes <input type="checkbox"/>	No <input type="checkbox"/>				
Floating material	Yes <input type="checkbox"/>	No <input type="checkbox"/>				
Suspended Material	Yes <input type="checkbox"/>	No <input type="checkbox"/>				
_____	Yes <input type="checkbox"/>	No <input type="checkbox"/>				
Colorations	Yes <input type="checkbox"/>	No <input type="checkbox"/>				
Acidity	Yes <input type="checkbox"/>	No <input type="checkbox"/>				
Site Inspections						
Outfalls or BMPs Evaluated			Deficiencies Noted			
(add additional sheets or attached detailed BMP Inspection Checklists)						

I. Risk Level 2 Monitoring and Reporting Requirements

Table 2- Summary of Monitoring Requirements

Risk Level	Visual Inspections					Sample Collection	
	Quarterly Non-storm Water Discharge	Pre-storm Event Baseline	REAP	Daily Storm BMP	Post Storm	Storm Water Discharge	Receiving Water
2	X	X	X	X	X	X	

Site Inspections	
Outfalls or BMPs Evaluated	Deficiencies Noted
(add additional sheets or attached detailed BMP Inspection Checklists)	

got swppp?

got SWPPP?

Rain Event Action Plan

- Required of Risk Levels 2 & 3
- QSP must develop a REAP 48 hours prior to any likely precipitation event. A likely precipitation event is any weather pattern that is forecast to have a 50% or greater probability of producing precipitation in the project area. The QSP must obtain a printed copy of precipitation forecast information from the National Weather Service Forecast Office entering the zip code of the project's location at

<http://www.srh.noaa.gov/forecast>

Your National Weather Service forecast
Stockton CA

Enter Your "City, ST" or zip code

NWS Sacramento, CA Mobile Weather Information | En Español
Point Forecast: Stockton CA Last Update: 4:02 am PDT Apr 9, 2010
37.95°N 121.28°W (Elev. 16 ft) Forecast Valid: 7am PDT Apr 9, 2010-8pm PDT Apr 15, 2010

Forecast at a Glance

Today	Tonight	Saturday	Saturday Night	Sunday	Sunday Night	Monday	Monday Night	Tuesday
Sunny Hi 73 °F Lo 45 °F	Mostly Clear Lo 45 °F	Partly Sunny Hi 64 °F Lo 46 °F	Mostly Cloudy Lo 46 °F	Rain Hi 58 °F Lo 44 °F	Showers Hi 58 °F Lo 44 °F	Chance Showers Hi 59 °F Lo 44 °F	Mostly Cloudy Lo 44 °F	Slight Chc Rain Hi 62 °F

Detailed 7-day Forecast

Hazardous weather condition(s):

Special Weather Statement

Today: Sunny, with a high near 73. Northwest wind between 10 and 13 mph.

Tonight: Mostly clear, with a low around 45. North northwest wind between 7 and 10 mph becoming calm.

Saturday: Partly sunny, with a high near 64. Light wind becoming south southwest between 11 and 14 mph.

Saturday Night: Mostly cloudy, with a low around 46. West southwest wind at 9 mph becoming east.

Sunday: Rain. High near 58. South southeast wind between 11 and 21 mph, with gusts as high as 30 mph. Chance of precipitation is 80%.

Sunday Night: Showers and possibly a thunderstorm. Low around 44. Chance of precipitation is 80%.

Monday: A 50 percent chance of showers. Mostly cloudy, with a high near 59.

Monday Night: Mostly cloudy, with a low around 44.

Tuesday: A slight chance of rain. Mostly cloudy, with a high near 62.

Detailed Point Forecast

Click Map for Forecast Disclaimer

Map | Satellite | Terrain

POWERED BY Google
Map data ©2010 Google - Terms of Use

Requested Location ■ Forecast Area
Lat/Lon: 37.95°N 121.28°W Elevation: 16 ft

Current Conditions

Stockton, Stockton Metropolitan Airport
Last Update on 09 Apr 5:55 PDT

got swppp?

got SWPPP?

- Must be done during all phases of the construction project
- List activities associated with that phase
- List trades that are active
- List contractor / sub-contractor information and emergency contact information
- List preventative action needed.

Rain Event Action Plan (REAP)		
Date:		WDID Number:
Date Rain Predicted to Occur:		Predicted % chance of rain:
Site Information:		
Site Name, City and Zip Code		Project Risk Level: <input type="checkbox"/> Risk Level 2 <input type="checkbox"/> Risk Level 3
Site Stormwater Manager Information:		
Name, Company, Emergency Phone Number (24/7)		
Erosion and Sediment Control Contractor – Labor Force contracted for the site:		
Name, Company, Emergency Phone Number (24/7)		
Stormwater Sampling Agent:		
Name, Company, Emergency Phone Number (24/7)		
Current Phase of Construction <i>Check ALL the boxes below that apply to your site.</i>		
<input type="checkbox"/> Grading and Land Development	<input type="checkbox"/> Vertical Construction	<input type="checkbox"/> Inactive Site
<input type="checkbox"/> Streets and Utilities	<input type="checkbox"/> Final Landscaping and Site Stabilization	<input type="checkbox"/> Other:
Activities Associated with Current Phase(s) <i>Check ALL the boxes below that apply to your site (some apply to all Phases).</i>		
+ Grading and Land Development:		
<input type="checkbox"/> Demolition	<input type="checkbox"/> Vegetation Removal	<input type="checkbox"/> Vegetation Salvage-Harvest
<input type="checkbox"/> Rough Grade	<input type="checkbox"/> Finish Grade	<input type="checkbox"/> Blasting
<input type="checkbox"/> Soil Amendment(s):	<input type="checkbox"/> Excavation (____ ft)	<input type="checkbox"/> Soils Testing
<input type="checkbox"/> Rock Crushing	<input type="checkbox"/> Erosion and Sediment Control	<input type="checkbox"/> Surveying
<input type="checkbox"/> Equip. Maintenance/Fueling	<input type="checkbox"/> Material Delivery and Storage	<input type="checkbox"/> Other:
Streets and Utilities:		
<input type="checkbox"/> Finish Grade	<input type="checkbox"/> Utility Install: water-sewer-gas	<input type="checkbox"/> Paving Operations
<input type="checkbox"/> Equip. Maintenance/Fueling	<input type="checkbox"/> Storm Drain Installation	<input type="checkbox"/> Material Delivery & Storage
<input type="checkbox"/> Curb and Gutter/Concrete Pour	<input type="checkbox"/> Masonry	<input type="checkbox"/> Other:

Scenario Activity

It is Monday morning, grading on your site is nearing completion and foundations will begin to be poured tomorrow. You heard on your way to work, that there is a 70% chance of rain on Wednesday.

1. Confirm the rain on the NOAA website
2. Prepare a REAP
3. Complete your weekly & pre-storm inspection.

got swppp?

got SWPPP?

Meet the inspectors



Jeff Wait
Port of Stockton



Ricco Ramirez
City of Stockton



Justin Padilla
San Joaquin County







CAUTION

SOLD

FOR SALE

got swppp?

got SWPPP?

Sampling & Testing

- The new CGP requires analytical testing for Risk Levels 2 & 3.
- Projects at Risk Levels 2 & 3 must have a written Construction Site Monitoring Plan (CSMP).
- All projects still must sample, as in the current permit, if there is reason to believe that non-visible pollutants are in storm water discharges.



got swppp?

got SWPPP?

Sampling & Testing

- Collect grab samples from all discharge points.
- A minimum of **3** samples / day
- Stored water must be sampled when it is discharged.
- Sampling and visual observations are not required during dangerous weather conditions OR outside of scheduled business hours. If no samples are collected due to these reasons, it must be explained in the annual report.

Other containers may be needed for “non-visible” pollutants



This is a good container for pH & turbidity

got swppp?

got SWPPP?

Sampling & Testing

- If you suspect run-on is causing your site's water to be high in turbidity or is affecting the pH, you are required to sample the run-on.
- Samplers must be trained to sample in accordance with the State's *SWAMP Quality Assurance Program Plan* and the American Public Health Association's "*Standard Methods for the Examination of Water and Wastewater*".



got swppp?

got SWPPP?

EnviroSupply
& Service
INC.

Monitoring
Demonstration





got swppp?

got **SWPPP?**

Evaluate, Report, & Terminate

2:30 – 3:30 PM



got swppp?

got SWPPP?

NAL - Numeric Action Levels

NEL - Numeric Effluent Limitations

Table 1- Numeric Effluent Limitations, Numeric Action Levels, Test Methods, Detection Limits, and Reporting Units

Parameter	Test Method	Discharge Type	Min. Detection Limit	Units	Numeric Action Level	Numeric Effluent Limitation
pH	Field test with calibrated portable instrument	Risk Level 2	0.2	pH units	lower NAL = 6.5 upper NAL = 8.5	N/A
		Risk Level 3			lower NAL = 6.5 upper NAL = 8.5	lower NEL = 6.0 upper NEL = 9.0
Turbidity	EPA 0180.1 and/or field test with calibrated portable instrument	Risk Level 2	1	NTU	250 NTU	N/A
		Risk Level 3			250 NTU	500 NTU



got swppp?

got SWPPP?

RISK Level 2

NAL - Numeric Action Levels

- If a NAL is exceeded, the discharger must electronically file the monitoring results in violation within 10 days after the conclusion of the storm event.
- The NAL exceedance report must include a description of the current BMPs associated with the effluent sample and the proposed corrective actions.



got swppp?

got SWPPP?

NAL - Numeric Action Levels

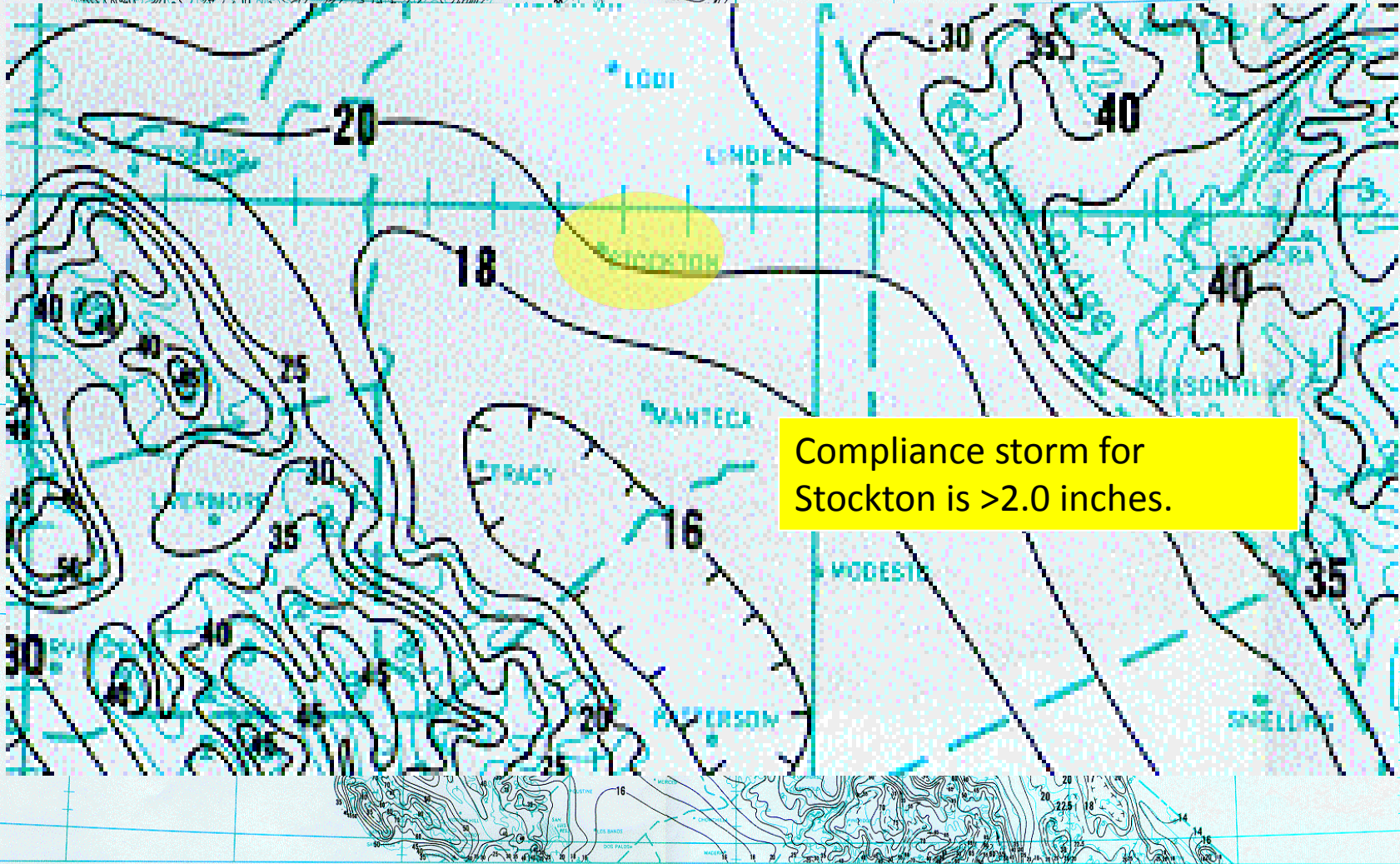
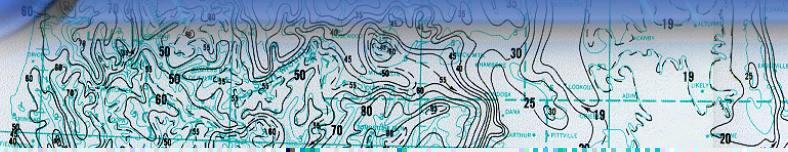
NEL - Numeric Effluent Limitations

RISK Level 3

- If a NEL is exceeded, the discharger is in violation of this General Permit and must electronically file the monitoring results in violation within 5 business days of obtaining the results.
- Discharges of storm water from Risk Level 3 sites must comply with applicable NELs, unless the storm event causing the discharges is determined after the fact to be equal to or larger than the Compliance Storm Event; a 5-year, 24-hour storm as determined by using this map:

got swppp?

got SWPPP?



Compliance storm for Stockton is >2.0 inches.

got swppp?

got SWPPP?

Stormwater Multi
Application Reporting
& Tracking System
SMARTS

Patrick O'Neil
pohn@waterboards.ca.gov
State Water Resources Control Board
Division of Water Quality
Industrial/Construction Storm Water Unit

Water Boards Storm Water Multiple Application & Report Tracking System 2

You are logged-in as: **Property Owner**. If this account does not belong to you, please log out.

Welcome to Storm Water Multiple Application Reporting and Tracking System - SMARTS

- **Approved/Terminated NOIs:**
View complete details of your applications, edit the allowed details, File a NOT for existing NOI and print the applicable documents
- **Pending NOI/NOT:**
Search and Locate your NOI/NOTs that were started earlier but not submitted, to complete and submit.
- **Apply for New Notice Of Intent (NOI):**
Start a new Industrial, construction or Linear Notice Of Intent.
- **Annual Reports:**
View the annual reports submitted earlier.
- **Invoices:**
View invoices of your NOIs.
- **Change Password:**
Change your user account's password
- **Update User profile:**
View and update your user account details.
- **Manage Data Submitters:**
Link, de-link your data submitters your NOIs and manage their privileges with respect to each of the NOIs.
- **Certify Existing NOI(s):**
Certify/Claim of your NOIs(Facilities)with SMARTS sent SCN

got swppp?

got SWPPP?

Water Boards Storm Water Multiple Application & Report Tracking System 2

[Help](#)

[Logout](#)

You are logged-in as: **Tom Rosales** . If this account does not belong to you, please log out.

Navigate To:

Storm Water Annual Report Monitoring (SWARM) Facility Search

Facility Name:

WDID:

Physical Address:

City: Zip: County:

Region:

Reporting Period:

Report Status:

Annual Reports

Facility Name	Wdid	Physical Address	Reporting Period	Status	Receipt Date	Entry By	Remand Report?	Delete Report?	Report Required?
3A Treatment Plant	9 30U16602	26801 Camino Capistrano	07/01/2009-06/30/2010	In-Progress		discharger			Y
Coastal Treatment Plant	9 30I005780	28303 Alicia Pkwy	07/01/2009-06/30/2010	Future					Y
Reg Treatment Plant	9 30I005779	29201 La Paz Rd	07/01/2009-06/30/2010	Future					Y

Adhoc Reports:

Facility Name	Wdid	Physical Address	Event Period	Status	Receipt Date	Entry By	Start/Edit	Remand Report?	Delete Report?
3A Treatment Plant	9 30C016602	26801 Camino Capistrano	01/13/2010-01/14/2010				<input type="button" value="Start New"/>		
Reg Treatment Plant	9 30C005779	29201 La Paz Rd	02/13/2010-03/15/2010				<input type="button" value="Start New"/>		
Coastal Treatment Planttd->	9 30C005780	28303 Alicia Pkwy	02/11/2010 02/10/2010				<input type="button" value="Start New"/>		
Coastal Treatment Plant	9 30C005780	28303 Alicia Pkwy	01/10/2010-01/11/2010	Submitted	01/15/2010	discharger	<input type="button" value="View/Edit"/>	Remand	Delete
Reg Treatment Plant	9 30C005779	29201 La Paz Rd	01/13/2010-01/15/2010	In-Progress			<input type="button" value="View/Edit"/>		



got SWPPP?

Water Boards Storm Water Multiple Application & Report Tracking System 2

Hel

You are logged-in as: Tom Rosales . If this account does not belong to you, please log out.

Ad-hoc Reports - Start New Report

Facility Name:	3A Treatment Plant	Agency:	South Orange
WDID ID:	9 30C016602	Report Status:	

Construction Adhoc Reports :

Please Enter the Following Event Details to Start the Report Entry -

Event Type:

Event Start Date/Time: Date in MM/DD/YYYY - Time in HH:MM format

Event End Date/Time: Date in MM/DD/YYYY - Time in HH:MM format

got swppp?

got SWPPP?

General Info **Raw Data** Data Summary Attachments Certify Notes

The following are Sample Details along with Entered measurements (lab results).

Save & Stay Save & Add New Sample Save & Back To List Delete Sample

Discharge Description:* Storm Water Sample Date/Time:* Date and Time MM/DD/YYYY HH:mm format Rainfall Amount:
Time Discharge Started:* (hh24:mm) Enter mid-night time as 23:59 SWPPP practitioner:*

Parameter	ND Entry Result Qualifier	Result	Unit Conversions Units	Analytical Method	Method Detection Limit	Analyzed By	Delete
Electrical Conductivity @ 25 Deg. C	=	<input type="text"/>	umhcs/cm	A2510B	<input type="text"/>	LAE	
Oil and Grease	=	<input type="text"/>	mg/L	A5520B	<input type="text"/>	LAE	
pH	=	<input type="text"/>	SU	A4500HB	<input type="text"/>	LAE	
Total Suspended Solids (TSS)	=	<input type="text"/>	mg/L	A2540D	<input type="text"/>	LAE	

Select Parameter

Save & Stay Save & Add New Sample Save & Back To List Delete Sample



got swppp?

got SWPPP?

Stormwater Multi
Application Reporting
& Tracking System
SMARTS

Felicia Chui
pohu@waterboards.ca.gov
State Water Resources Control Board
Division of Water Quality
Industrial/Construction Storm Water Unit

Conditions for a NOT

- a. For purposes of “final stabilization,” the site will not pose any additional sediment discharge risk than it did prior to the commencement of construction activity;
- b. There is no potential for construction-related storm water pollutants to be discharged into site runoff;
- c. Final stabilization has been reached;
- d. Construction materials and wastes have been disposed of properly;
- e. Compliance with the Post-Construction Standards in Section XIII of this General Permit has been demonstrated;
- f. Post-construction storm water management measures have been installed and a long-term maintenance plan has been established; and
- g. All construction-related equipment, materials and any temporary BMPs no longer needed are removed from the site.



got swppp?

got SWPPP?

Stormwater Multi
Application Reporting
& Tracking System
SMARTS

Felicia Chui
pohu@waterboards.ca.gov
State Water Resources Control Board
Division of Water Quality
Industrial/Construction Storm Water Unit

Conditions for a NOT

The NOT must demonstrate through photos, RUSLE or RUSLE2, or results of testing and analysis that the site meets all of the conditions above (Section II.D.1) and the final stabilization condition (Section II.D.1.a) is attained by one of the following methods:

a. “70% final cover method,” no computational proof required

OR:

b. “RUSLE or RUSLE2 method,” computational proof required

OR:

c. “Custom method”, the discharger shall demonstrate in some other manner than a or b, above, that the site complies with the “final stabilization” requirement in Section II.D.1.a.



got SWPPP?

Notice of Termination

NOTICE OF INTENT - NOTs list

The Notice of Intent (NOI) is organized into different sections. Please complete all applicable sections before submitting the form. If you want to complete the NOI at a later time, please click o

WDID: 8 33C356999	Owner: Norco City 2870 Clark Ave Norco CA 92860	Status: Active	Process
Business Type: Construction	Site: Silverlakes Equestrian & Sports Park 5505 Hammer Ave Norco CA 91752	Last Modified on: 12/16/2009	Termina

- Owner Info
- Developer Info
- Site Info
- Addtnl Site Info
- Risk
- Drainage
- Billing Info
- Attachments
- Certification
- Print
- Status History
- NOTs

Add New NOT

NOT_ID	WDID	Status	Status Date	Basis of Termination
--------	------	--------	-------------	----------------------

Fields marked with * are mandatory fields.

got swppp?

got SWPPP?

NOT Entry Form

NOT Form

NOT Attachments

NOT Review

NOT Status

NOT Print

Back To NOI Summary

Please fill in this section where you want the confirmation letter sent to.

Organization Name:	<input type="text"/>	Contact Person:(First Name)	<input type="text"/>
Street Address:	<input type="text"/>	Last Name	<input type="text"/>
Line#2:	<input type="text"/>	Title:	<input type="text"/>
City/ State/ Zip:	<input type="text" value="CA"/> <input type="text"/>	Phone:	<input type="text"/> *(ex:999-999-9999) Ext <input type="text"/>
		Email:	<input type="text"/> (abc@xyz.com)

Basis of Termination(Must select one option below)

- The construction project is complete and the following conditions have been met.
- All elements of the Storm Water Pollution Prevention Plan have been completed.
 - Construction materials and waste have been disposed of properly.
 - The site is in compliance with all local storm water management requirements.
 - A post-construction storm water operation and management plan is in place.
- Date of project completion: (mm/dd/yyyy) *
- Construction activities have been suspended, and the following conditions have been met.
- temporarily or indefinitely *
- All elements of the Storm Water Pollution Prevention Plan have been completed.
 - Construction materials and waste have been disposed of properly.
 - All denuded areas and other areas of potential erosion are stabilized.
 - An operation and maintenance plan for erosion and sediment control is in place.
 - The site is in compliance with all local storm water management requirements.
- Date of suspension: (mm/dd/yyyy) * Expected start up date: (mm/dd/yyyy)
- Site cannot discharge storm water to waters of the United States (check one).
- All storm water is retained on site.
 - All storm water is discharged to evaporation or percolation ponds offsite.
- Discharge of storm water from the site is now subject to another NPDES general permit or an individual NPDES permit.
- NPDES Permit No: * Date coverage began: (mm/dd/yyyy) *

got swppp?

got SWPPP?

NOT Entry Form con't

NPDES Permit No: * Date coverage began: (mm/dd/yyyy) *

New Operator/Owner:

Date facility/site was transferred to new operator/owner: (mm/dd/yyyy) *

Have you notified the new operator/owner of the storm water NPDES permit requirements? Yes No *

Business Name:	<input type="text"/> *	First Name	<input type="text"/> *
Street Address:	<input type="text"/> *	Last Name	<input type="text"/> *
Line#2:	<input type="text"/>	Title:	<input type="text"/>
City/ State/ Zip:	<input type="text"/> CA <input type="text"/> *	Phone:	<input type="text"/> * (999-999-9999) Ext <input type="text"/>
		Email:	<input type="text"/> * (abc@xyz.com)

Other

Explanation of Basis of Termination: Explain any other basis/reasons that are not covered above

Certification & Submission check list

Question Text

I certify under penalty of law that this document and all attachments were prepared under the direction or supervision in accordance with a system designed to assure that qualified personnel gather and evaluate the information submitted. Based on my inquiry of the person or persons who manage the system, or those persons directly responsible for gathering the information, the submitted is, to the best of my knowledge and belief, true, accurate, and complete. I am aware that there are significant penalties for submitting false information, including the possibility of imprisonment for knowing violations.

I am also aware that my user ID and password constitute my electronic signature and any information I indicate I am electronically certifying contains my signature. I understand that my electronic signature is the legal equivalent of my handwritten signature. My signature on this form certifies that my electronic signature is for my own use, that I will keep it confidential, and that I will not delegate such authority to any other person. Should I wish to delegate such authority, I will do so formally in writing and electronically notify the State Water Board using SMARTS2 of such delegation within 10 days of the date I further certify that I will protect my electronic signature from unauthorized use, and that I will contact the State Water Board, within two business days of discovery, if I suspect that my electronic signature has been lost, stolen, or otherwise compromised.

NOT Certified By

First Name	<input type="text"/> *	Last Name	<input type="text"/> *
Title:	<input type="text"/> *	Date	<input type="text"/> *

NOT Save In Progress

NOT Submit

got swppp?

got SWPPP?

NOT Attachments

5505 Hammer Ave Norco CA 91752

NOT Form

NOT Attachments

NOT Review

NOT Status

NOT Print

Back To NOI Summary

Please provide the following details to upload the corresponding files.

Attachment FileType:

SWPPP

Attachment Title :

File Description:

if Partial Document, Part No

 of Total Parts

Click "Browse" to locate the file and then click "Upload File"

File Name

Browse...

UpLoad File

Attached files: The following are the current documents related to the NOI. Click on the link to view them.

Attachment Id

File Type

File Title

File Desc

Doc Part No/Total Parts

Fields marked with * are mandatory fields.



got SWPPP?

NOT Receipt Letter

5505 Hammer Ave Norco CA 91752

[NOT Form](#) [NOT Attachments](#) [NOT Review](#) [NOT Status](#) [NOT Print](#) [Back To NOI Summary](#)

Print NOT Copy

<input type="button" value="Print NOT:Approval Letter"/>	Approval Letter
<input type="button" value="Print NOT:Denial Letter"/>	Denial Letter (Only if it was Denied)
<input type="button" value="Print NOT:Return Letter"/>	Return Letter (Only if it was Return)

Fields marked with * are mandatory fields.

© 2009 State of California. [Conditions of Use](#) [Privacy Policy](#)



got swppp?

got SWPPP?

Dates to Remember !

- Permit Adoption Date: September 2, 2009
- Permit Effective Date: July 1, 2010
- Interim QSD effective: July 1, 2010
- QSD/QSP Training: September 2, 2011
- Post -construction grandfathering through September 2, 2012
- Risk Determination grandfathering through September 2, 2011
- First annual report due September 1, 2011

got swppp?

got SWPPP?



STORMWATER
Pollution Prevention
SAN JOAQUIN COUNTY



*The County of San Joaquin,
Port of Stockton, City of Stockton
and
the 2010 "GOT SWPPP?" Partners
Present*

Certificate of Completion

To

John Teravskis

For

April 2010 "Got SWPPP?" Training Program

*John M. Teravskis
Operations Manager
WGR Southwest*



got swppp?

got **SWPPP?**

Join us tomorrow for ...

DAY 2

Post Construction LID Hydromod Water Conservation

got swppp?

got SWPPP?



GOT SWPPP?



The City of Manteca, City of Lathrop,
City of Ripon, and The City of Tracy

Offer "A Unique 2 Day Hands-On Training"

May 18 & 19, 2010

(Day 1) "The New Construction General Permit"

Permit Registration Documents, Complete a NOI, Determine Risk Level and Responsibility, Review SWPPP Requirements, BMP Selection, Inspections and Monitoring, and Numeric Action Limits, Numeric Effluent Limits, and Reporting

8:00AM - 2:30PM

(Day 2) "Storm Water Design Measures"

Fictional Job Site Scenario, Storm Water Design Standards, LID, Hydromodification Requirements, Identification of Pollutants of Concern (POCs), Selection of Storm Water Treatment Controls, Selection of LID Features, and Identification of Water Conservation Features to Incorporate into Design of Example Project

8:00AM - 2:30PM



1-day Workshop Pass:

\$60 participant

\$40 students (fulltime students with ID)

Continental Breakfast and Boxed Lunch Included

2-day Workshop Pass:

\$100 participant

\$70 students (fulltime students with ID)

Continental Breakfast and Boxed Lunch Included

Presented by:



Location:

Manteca Senior Center
295 Cherry Lane
Manteca, CA 95337

Participants REGISTER NOW
Visit: www.gotswppp.com or
Call: (209-334-5363 Ex 201)



GOT SWPPP?



The City of Modesto and Stanislaus County

Offer "A Unique 2 Day Hands-On Training"

June 16 & 17, 2010

(Day 1) "The New Construction General Permit"

Permit Registration Documents, Complete a NOI, Determine Risk Level and Responsibility, Review SWPPP Requirements, BMP Selection, Inspections and Monitoring, and Numeric Action Limits, Numeric Effluent Limits, and Reporting

8:00AM - 3:30PM

(Day 2) "Storm Water Design Measures"

Fictional Job Site Scenario, Storm Water Design Standards, LID, Hydromodification Requirements, Identification of Pollutants of Concern (POCs), Selection of Storm Water Treatment Controls, Selection of LID Features, and Identification of Water Conservation Features to Incorporate into Design of Example Project

8:00AM - 3:30PM



1-day Workshop Pass:

\$60 participant

\$40 students (fulltime students with ID)

Continental Breakfast and Boxed Lunch Included

2-day Workshop Pass:

\$100 participant

\$70 students (fulltime students with ID)

Continental Breakfast and Boxed Lunch Included

Presented by:



Location:

Harvest Hall / Ag Center
3800 Cornucopia Way
Modesto, CA

Participants REGISTER NOW
Visit: www.gotswppp.com or
Call: (209-334-5363 Ex 201)



got SWPPP?

Thank you for attending ...

Day 1 of the 2010 Got SWPPP?

